

## New Features

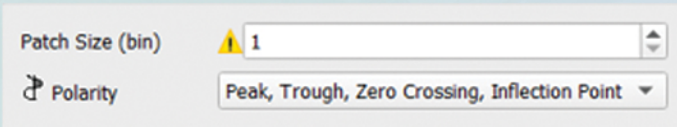
## Model-Grid 2.0

Go further and beyond your seismic data

### Higher resolution for 2D & 3D Model-Grid

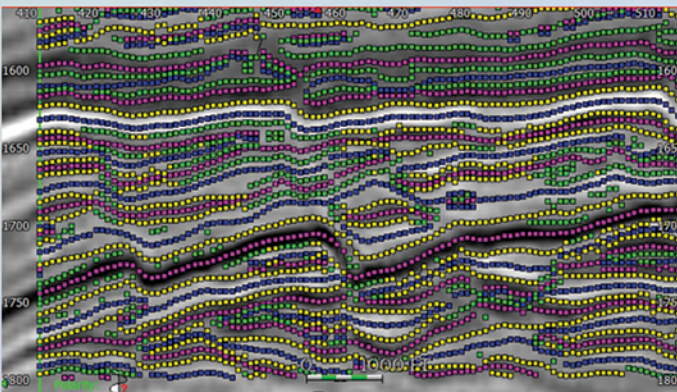
#### Finer spatial resolution

- ▲ Minimum patch size set to 1 bin to better map complex geological geometries and steep-dip reflectors
- ▲ Performance optimization



#### Higher vertical resolution

- ▲ New polarity option to compute at the same time Peak, Trough, Zero Crossing & Inflection Point



#### Polarity editing and filtering options

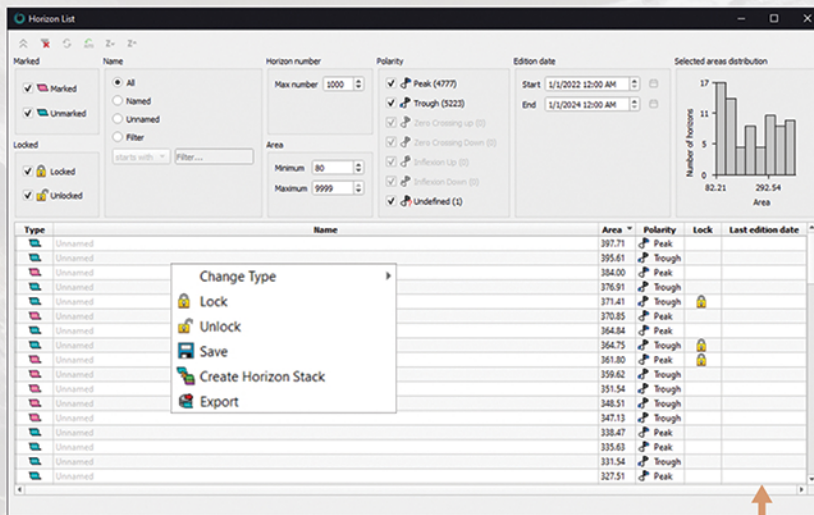
- ▲ Default color by polarity:
  - ▲ Can be edited for specific Model-Grid
  - ▲ Can be edited from general Settings for all Model-Grids
- ▲ Filtering by polarity to only display polarities used for interpretation

Display	Object	
<input type="checkbox"/>	2D Preview	Yes
<input checked="" type="checkbox"/>	Grid	Yes
	Edge	Pen [color: #000000, style: 1, w...
	Polarities	
<input checked="" type="checkbox"/>	Peak	Yes
	Fill	Brush [color: #ff00ff, style: 1]
<input checked="" type="checkbox"/>	Trough	Yes
	Fill	Brush [color: #0000ff, style: 1]
<input checked="" type="checkbox"/>	Zero Crossing Up	Yes
	Fill	Brush [color: #ffff00, style: 1]
<input checked="" type="checkbox"/>	Zero Crossing Down	Yes
	Fill	Brush [color: #ffff00, style: 1]
<input checked="" type="checkbox"/>	Inflection Up	Yes
	Fill	Brush [color: #55ff00, style: 1]
<input checked="" type="checkbox"/>	Inflection Down	Yes
	Fill	Brush [color: #00ff00, style: 1]
<input checked="" type="checkbox"/>	Undefined	Yes
	Fill	Brush [color: #000000, style: 1]

### Enhanced Horizon list interactivity

#### Upgraded Horizon list interface

- ▲ Horizon list can be adjusted and extracted from the application
- ▲ Filtering options available in ribbon
- ▲ Maximum number of displayed horizons increased
- ▲ Filtering Area can be done with minimum and maximum values
- ▲ Histogram added to show the range area of the filtered horizons

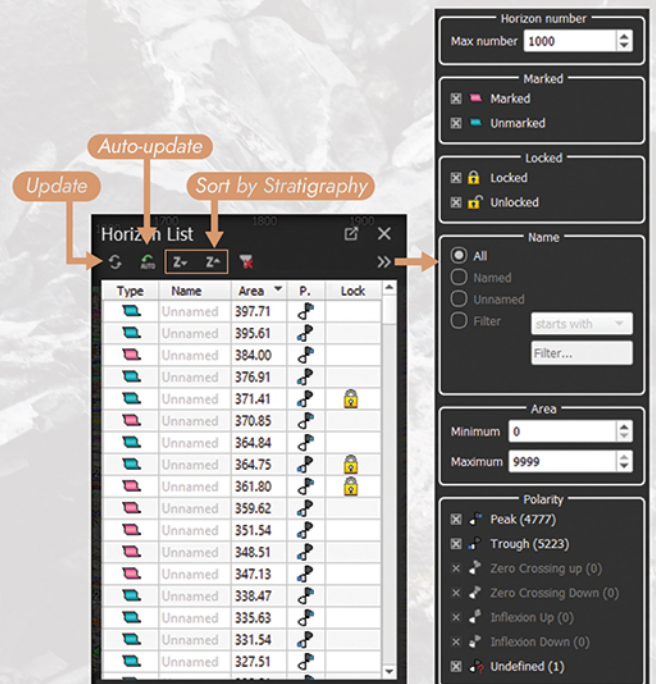


Horizon list maximized view

Last edition date

#### Improved Horizon edition usability

- ▲ Horizon multiselection deployed for all the context menus
- ▲ New Auto-update option
- ▲ Consistent horizon naming while exporting
- ▲ New Horizon Stack export option from the Horizon list



Horizon list

Filtering options



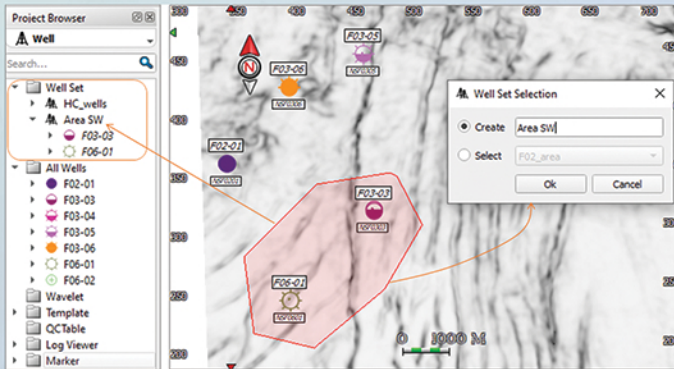
# Data Management

## PaleoScan™ Wellheads

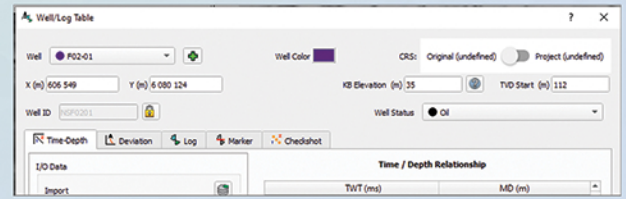
Well ID (UWI), Original Spatial Unit, Well Status and Well Color are now available in the PaleoScan™ database. Status is defined on wells at the import with associated symbols for 2D viewers and tools.

### Well Set Creation

- ▲ at the Import
- ▲ from the Project Browser
- ▲ from polygons selection in all 2D viewers
- ▲ from the Well Manager

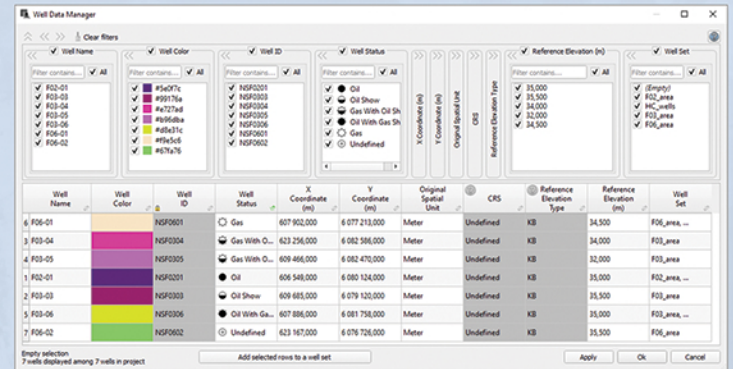


Easy ways to get your wells sorted into well sets



### Well Data Manager

- ▲ Well list
- ▲ Filter / Sort
- ▲ Wellhead data (UWI, Color, Wellhead Status, Spatial Unit)
- ▲ Well Set

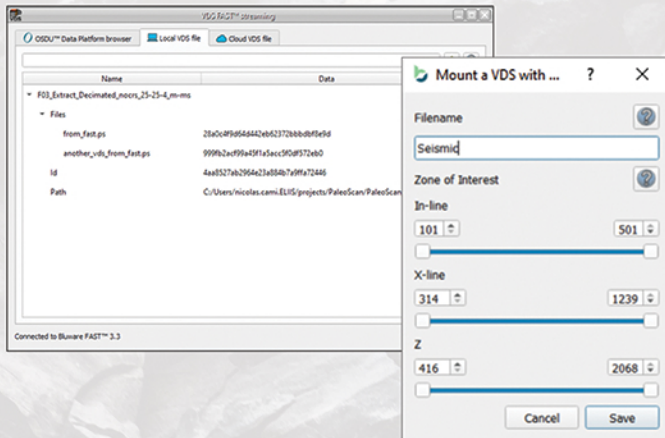


The Well Data Manager provides capabilities to view and edit a large number of wellhead data at the same time

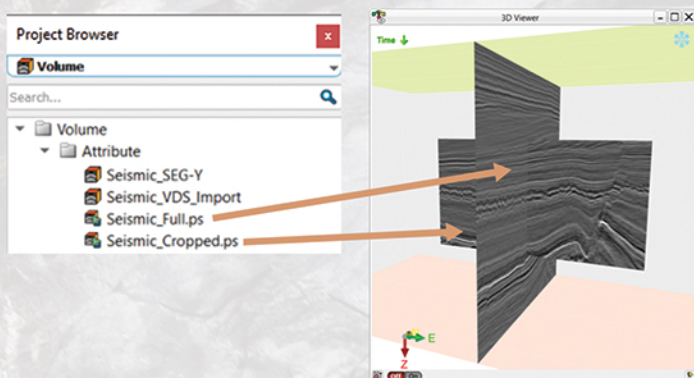
## New VDS volume data management

### New VDS™ FAST™ options allow to stream:

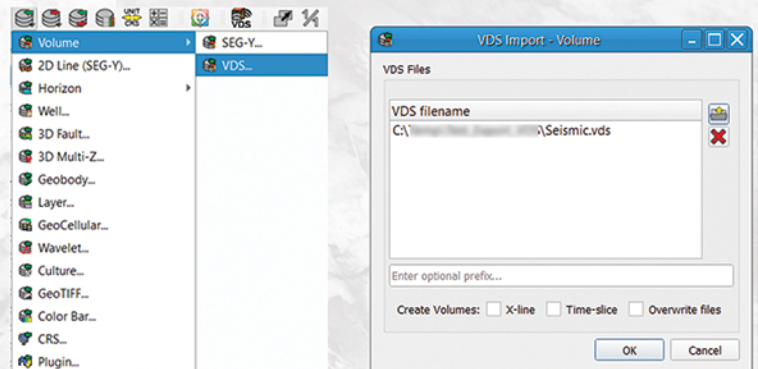
- ▲ Local VDS files stored on local storage
- ▲ Remote VDS files stored on Cloud storage



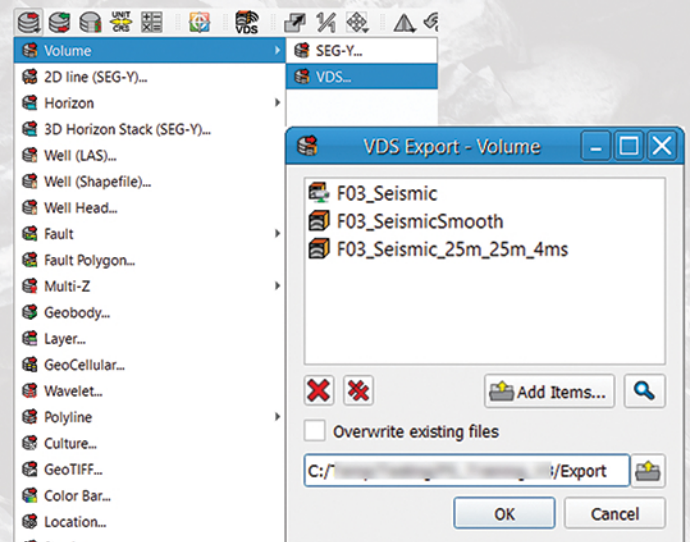
Zone of Interest can be specified while streaming the VDS™ volumes



Ability to import/export a VDS volume in PaleoScan™ using the OpenVDS API



Imported volume



Exported volume