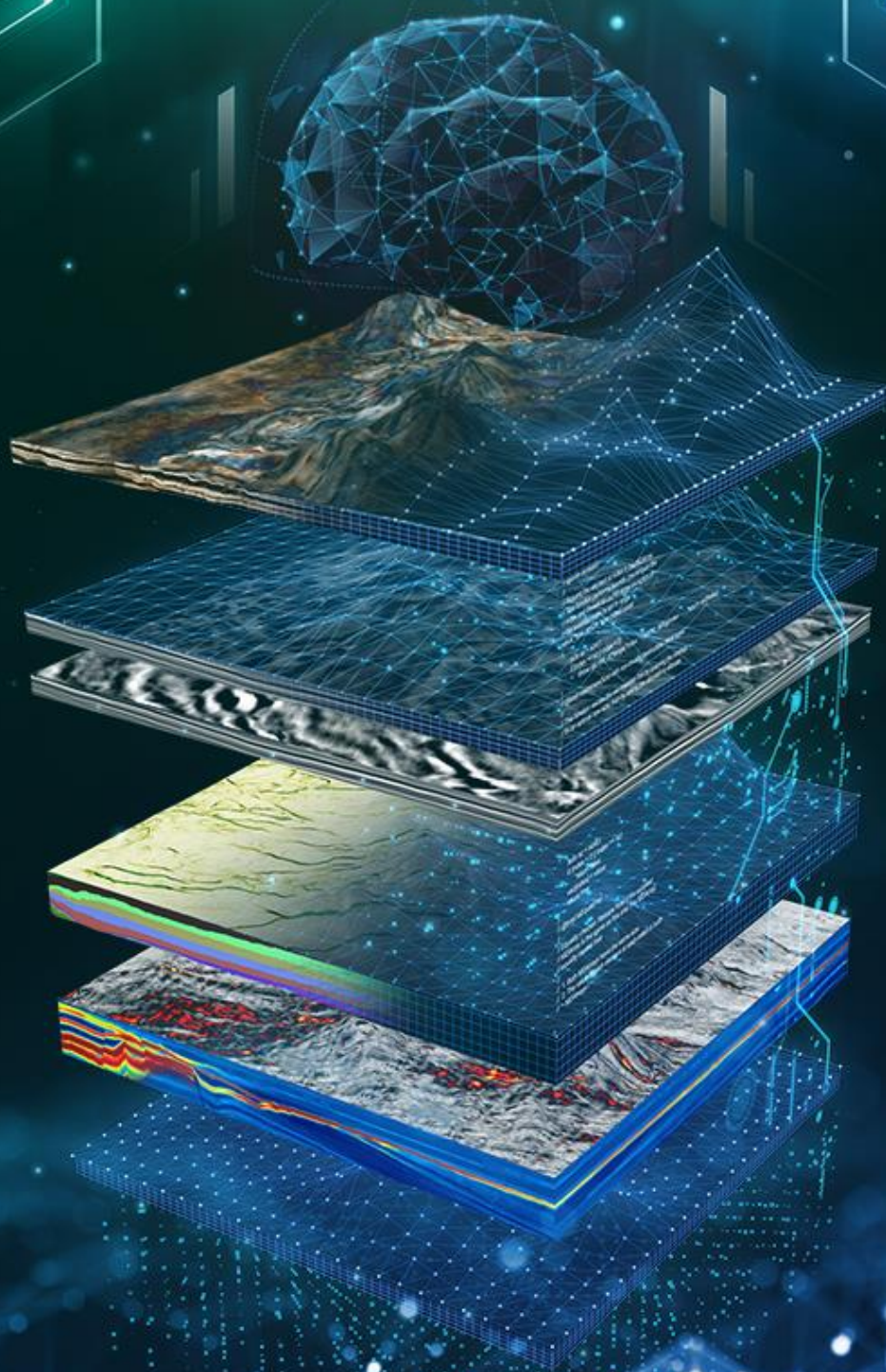


PALEOSCAN™ 2024

Global Seismic Interpretation Platform



DATA CONNECTOR - PATCH NOTES

Petrel®



PaleoScan™ Data Connector 2024.1.1

Petrel® to PaleoScan™

Feature	Description
Project Management	Fixed the reading of the PaleoScan™ project when it has some data folders with restricted or denied read/write access.
Multi-Z	Fixed an issue during Multi-Z objects transfer as triangle mesh using the "Fault" field

PaleoScan™ to Petrel®

Feature	Description
Project Management	Fixed a crash happening when an object is selected for the transfer but the PaleoScan™ project field becomes empty.
Geobody	Fixed a crash when transferring a geobody.
Faults	Fixed a crash when faults are transferred as a triangle mesh object
Multi-Z	Issue related to an incorrect transfer of Multi-Z object was fixed. The object was transferred but it was empty in Petrel® application.

Licensing

The PaleoScan™ Data Connector 2024 is included as an add-on module to PaleoScan™ 2024. It can be downloaded from Eliis website. A personal user account is required. If you do not have a login and password to access Eliis extranet, you can fill in this [form](#).

Eliis can provide a free 30-day temporary license to evaluate PaleoScan™ 2024 including the Petrel® plug-in. The temporary license will give full access to the software with all add-on modules.

Compatibility

The PaleoScan™ Data Connector 2024.1 is only compatible with Petrel® 2023 and PaleoScan™ 2024.

	Required PaleoScan™ versions	Required Petrel® versions
PaleoScan™ Data Connector 2024.1	PaleoScan™ 2024 (64-bit) and above	Petrel® 2023 (64-bit)



Copyright Notice

All rights reserved. No part of this document may be reproduced, stored in a retrieval system, or translated in any form or by any means, electronic or mechanical, including photocopying and recording, without the prior written permission of Eliis SAS, 3 Rue Jean Monnet, 34830 Clapiers, FRANCE.

Disclaimer

The use of this product is governed by the PaleoScan™ Software License Agreement. Eliis makes no warranty, expressed, implied, or statutory, with respect to the product described herein and disclaims without limitation any warranty of merchantability or fitness for a particular purpose. Eliis reserves the right to revise the information in this manual at any time without notice.

Contact

For any information request, you can contact us.

Web: www.eliis-geo.com

Europe - Montpellier
Eliis SAS

contact@eliis.fr
+33 (0) 4.67.41.31.16
+33 (0) 4 30 96 61 33
(support)

North America - Houston
Eliis Inc.

contactus@eliis.fr
+1 832 304 9817

Australia - Perth
Eliis Pty Ltd

contactau@eliis.fr
+61 434 352 642

Malaysia – Kuala Lumpur
Eliis Sdn Bhd

contactmy@eliis.fr
+60 3 4810 3821

Brazil – Rio de Janeiro
Eliis Ltda

contactbr@eliis.fr
