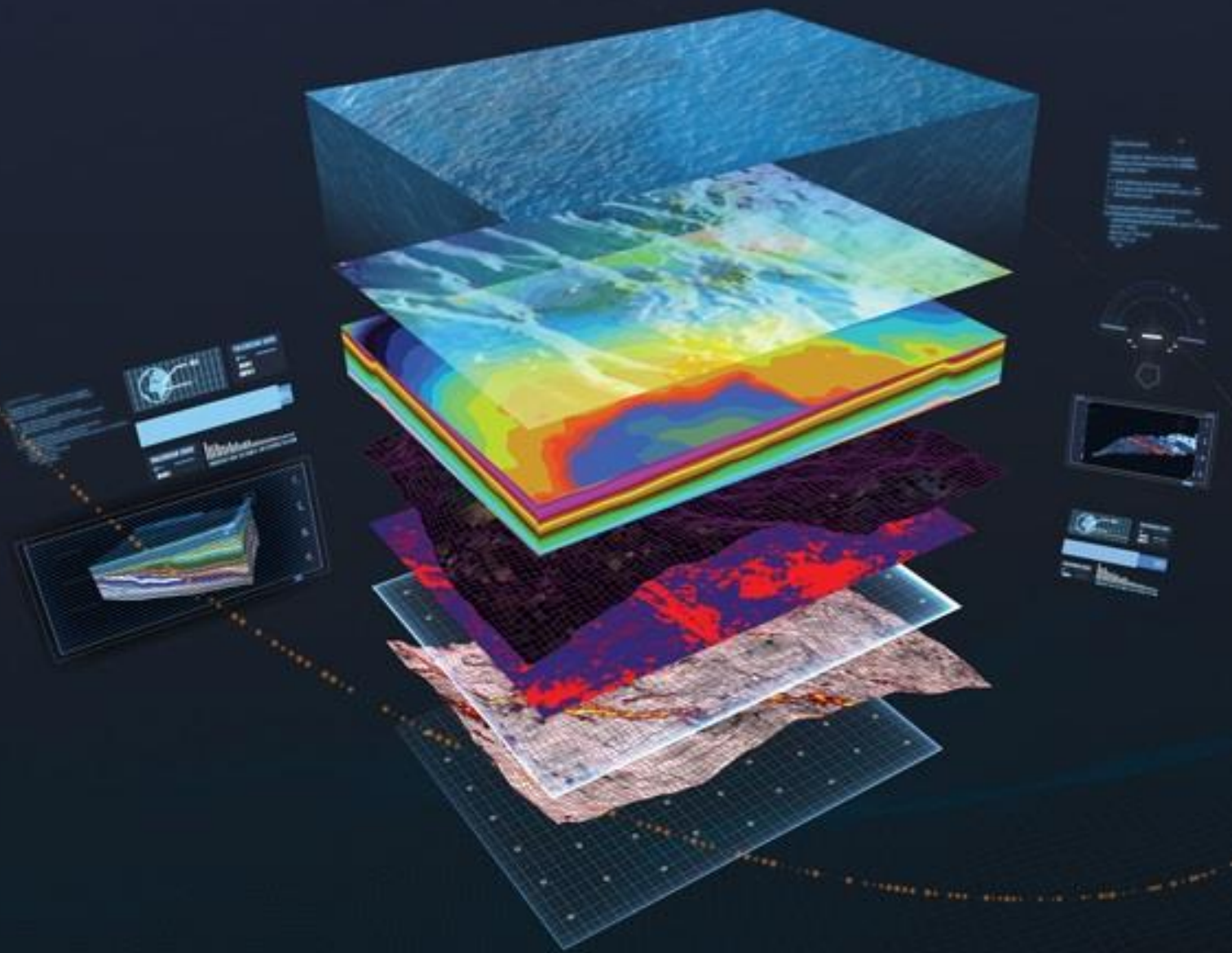


# PALEOSCAN™ 2020

Data Connector *Release Notes*

Petrel® 2019



Global Seismic Interpretation Software



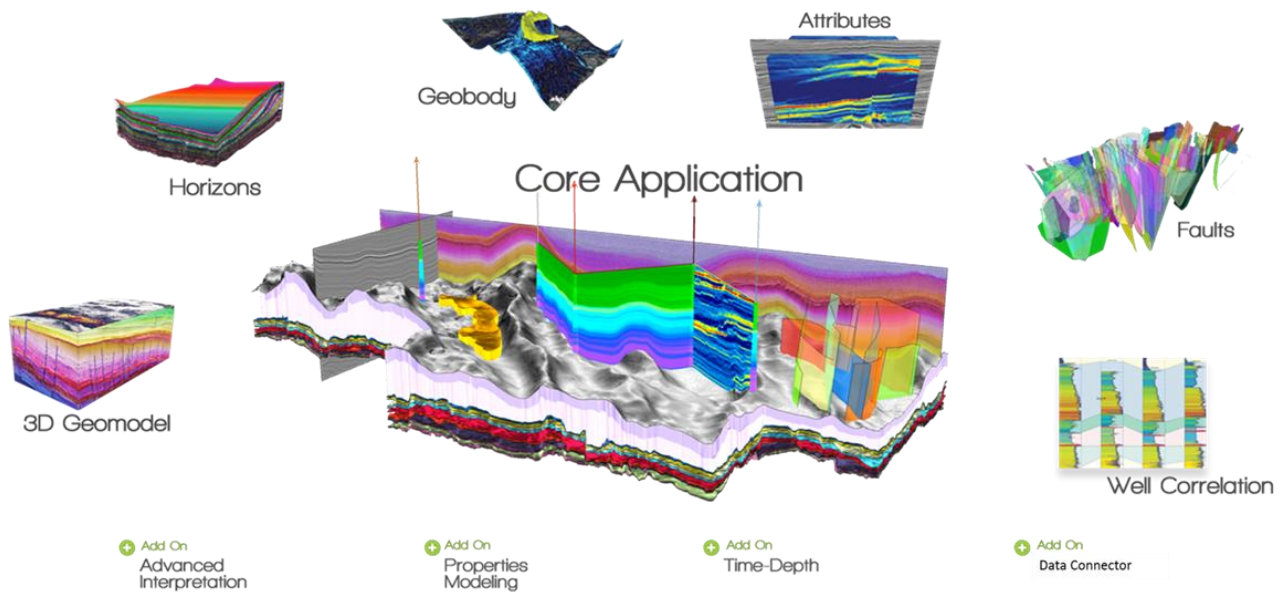
# PaleoScan™ 2020

PaleoScan™ is a new generation of 3D seismic interpretation software, where geoscientists build a geological model while interpreting seismic volumes. With this new release, Eliis continues to innovate in seismic interpretation and brings more tools to interpret larger seismic datasets, with added speed and precision.

The 2020 version includes all updates counted in the last version and features, new and improved tools, for a better support of data constraints.

- A new **Multi-Z Model** is available.
- A new **Seismic Ghost** tool is available.
- The **Automatic Fault Extraction** attributes are enhanced. They are more accurate and adjustable.
- The **2D Interpretation Workflow** is enhanced.
- The **Horizon Management** is enhanced.
- A new **Reservoir Toolbar** is available, for advanced workflows.

This document lists all the new features and upgrades implemented in PaleoScan™ 2020. A detailed description of each tool can be found in the “User Guide” or on the web site ([www.eliis.fr](http://www.eliis.fr)).



# PaleoScan™ Data Connector 2020.1.0

---

## Petrel® to PaleoScan™

Feature	Description
<b>2D Horizon</b>	Assign PaleoScan™'s 2D Lines to the transferred 2D Horizons, to see the intersections in PaleoScan™.
<b>Triangle Mesh</b>	Can now export Petrel® Triangle Meshes as 3D Faults in PaleoScan™.
<b>Well Log</b>	The export procedure is no more aborted if the Well Log has no Measured Depth information.
<b>Time Depth Relationship</b>	The Checkshot is not set as active Time Depth Relationship anymore if another Log is already assigned as active Time Depth Relationship.
	Fix Time Depth Relationship naming.

## PaleoScan™ to Petrel®

Feature	Description
<b>Volume</b>	Improve transfer speed.
	Add a warning message if the CRS of the imported volume does not match the Petrel®'s project CRS.
<b>2D Line</b>	Fix wrong starting time issue.
<b>Borehole</b>	Fix unit conversion if Kelly Bushing or Measured Depth Start were in foot.
<b>3D Fault</b>	Can now import PaleoScan™ 3D Faults as Triangle Meshes in Petrel®.
<b>Horizon</b>	Improve horizon naming during export (special characters and name length)

# Licensing

---

The PaleoScan™ Data Connector 2020 is included as an add-on module to PaleoScan™ 2020. It can be downloaded from Eliis web site. A personal user account is required. If you do not have a login and password to access Eliis extranet, you can fill up this [form](#).

Eliis provides you a free 30-day temporary license to evaluate PaleoScan™ 2020 including the Petrel® plug-in. The temporary license will give you a full access to the software with all add-on modules.

# Compatibility

---

The PaleoScan™ Data Connector 2020.1 is only compatible with Petrel® 2019 and PaleoScan™ 2020:

<b>PaleoScan™ Data Connector 2020.1</b>	
Required PaleoScan™ versions	Required Petrel® versions
PaleoScan™ 2020 (64-bit) and above	Petrel® 2019 (64-bit)

## Copyright Notice

All rights reserved. No part of this document may be reproduced, stored in a retrieval system, or translated in any form or by any means, electronic or mechanical, including photocopying and recording, without the prior written permission of Eliis SAS, 3 Rue Jean Monnet, 34830 Clapiers, FRANCE.

## Disclaimer

The use of this product is governed by the PaleoScan™ Software License Agreement. Eliis makes no warranty, expressed, implied, or statutory, with respect to the product described herein and disclaims without limitation any warranty of merchantability or fitness for a particular purpose. Eliis reserves the right to revise the information in this manual at any time without notice.

## Contact

For any information request, you can contact us.

Web: [www.eliis.fr](http://www.eliis.fr)

**Europe - Montpellier**  
Eliis SAS

[contact@eliis.fr](mailto:contact@eliis.fr)  
+33 (0) 4.67.41.31.16

**Brazil – Rio de Janeiro**  
Eliis Ltda

[contactbr@eliis.fr](mailto:contactbr@eliis.fr)  
+55 (21) 99575-0071

**North America - Houston**  
Eliis Inc.

[contactus@eliis.fr](mailto:contactus@eliis.fr)  
+1 281 404 1515

**China - Beijing**  
Geoseismic Signal Corporation

[tonyqiu@gssgeo.com](mailto:tonyqiu@gssgeo.com)  
+86 10 8478-3912

**Australia - Perth**  
Eliis Pty Ltd

[contactau@eliis.fr](mailto:contactau@eliis.fr)  
+61 466 303 546

**Mexico - Merida**  
Apogee

[info@apogeegeo.com](mailto:info@apogeegeo.com)  
+52 1.993.113.6525

**Malaysia – Kuala Lumpur**  
Eliis Sdn Bhd

[contactmy@eliis.fr](mailto:contactmy@eliis.fr)  
+60 162 072 710